

OMNIA *Cabinet Hardware*



*W*elcome to the Omnia line of cabinet hardware. Artisans who understand that a beautiful design must be as comfortable to the hand as it is pleasing to the eye have crafted each piece in this collection. You will find that numbers of items have been created to complement our existing door knob and lever designs, affording you the opportunity to coordinate the hardware throughout your home or office.

Much of the Omnia cabinet hardware collection is manufactured from solid brass which imparts lasting beauty, richness of finish and endurance. However, it also includes knobs of the finest shimmering Italian crystal and glass which are then completed with solid brass fittings.

The collection also offers period-inspired decorative drop pulls, as well as a line of striking contemporary stainless steel pulls, knobs and large-scale door pulls.

Omnia's brass hardware is available in a range of finishes. Please note that only those finishes indicated in this catalog are available for immediate shipment. However, a variety of finish options may be ordered and we invite you to ask us about them.

Whether you prefer traditional or ornate design or are partial to contemporary style, we think you will find the perfect accent for all your cabinet doors and drawers in this latest collection from Omnia.

Cabinet **OMNIA** Hardware

Finish Options

Finish Code Description

US3	Polished & Lacquered Brass
US26	Polished Chrome
US26D	Satin Chrome
SB	Shaded Bronze
US10B	Oil Rubbed Bronze, Lacquered
US14	Polished Nickel

Finish Code Description

US15	Satin Nickel
US15A	Pewter
US28	Aluminum
US32	Polished Stainless Steel
US32D	Brushed Stainless Steel

Finish Code Description

US26/3	Chrome & Brass
US26D/3	Satin Chrome & Brass
US15/3	Satin Nickel & Brass
684/3	Black Chrome & Brass
VI	Vintage Iron
VC	Vintage Copper
VB	Vintage Brass



Solid Brass

9102 - US3 • US26

1" (25 mm) dia. 1" proj.
 1³/₁₆" (30 mm) dia. 1¹/₈" proj.
 1⁹/₁₆" (40 mm) dia. 1⁷/₁₆" proj.

Also available in
**US10B, US14, US15,
 VB, VC & VI.**

9158 - US3 • US26

1" (25 mm) dia. 1" proj.
 1³/₁₆" (30 mm) dia. 1⁵/₃₂" proj.
 1⁹/₁₆" (40 mm) dia. 1⁹/₃₂" proj.

Also available in
US10B, US14 & US15.

9100 - US3 • US26

1" (25 mm) dia. ⁷/₈" proj.
 1⁷/₃₂" (31 mm) dia. 1¹/₈" proj.
 1⁹/₁₆" (40 mm) dia. 1³/₈" proj.

Also available in
**US26D, US10B, US14,
 US15, VB, VC & VI.**



Solid Brass

9430 - US3 • US26 • SB

1" (25 mm) dia. 1" proj.
 1¹/₄" (32 mm) dia. 1¹/₄" proj.
 1⁵/₈" (41 mm) dia. 1⁷/₁₆" proj.

Also available in
**US10B, US14, US15,
 VB, VC & VI.**

9405 - US3 • US26 • SB

1¹/₄" (32 mm) dia. 1¹/₈" proj.
 1¹/₂" (38 mm) dia. 1¹/₂" proj.



9146

9160

9136

Solid Brass

9146 - US3 • US26

1 $\frac{3}{16}$ " (30 mm) dia. $\frac{7}{8}$ " proj.

1 $\frac{9}{16}$ " (40 mm) dia. 1 $\frac{1}{16}$ " proj.

9160 - US3 • US26

1" (25 mm) dia. $\frac{25}{32}$ " proj.

1 $\frac{1}{4}$ " (32 mm) dia. $\frac{29}{32}$ " proj.

1 $\frac{9}{16}$ " (40 mm) dia. 1 $\frac{1}{32}$ " proj.

9136 - US3 • US26

1" (25 mm) dia. 1 $\frac{1}{16}$ " proj.

1 $\frac{3}{16}$ " (30 mm) dia. $\frac{25}{32}$ " proj.

1 $\frac{9}{16}$ " (40 mm) dia. 1 $\frac{1}{16}$ " proj.



9141

9163

Solid Brass

9141 - US3 • US26 • SB

1 $\frac{3}{16}$ " (30 mm) dia. 1" proj.

1 $\frac{9}{16}$ " (40 mm) dia. 1 $\frac{3}{16}$ " proj.

9163 - US3 • US26

1 $\frac{3}{16}$ " (30 mm) dia. $\frac{5}{8}$ " proj.

1 $\frac{3}{8}$ " (35 mm) dia. 1" proj.

1 $\frac{9}{16}$ " (40 mm) dia. 1 $\frac{3}{16}$ " proj.

Also available in
**US10B, US14, US15,
VB, VC & VI.**

Also available in
**SB, US10B, US14,
US15, VB, VC & VI.**



9120

9130

9408

Solid Brass

9120 - US3 • SB

1" (25 mm) dia. $\frac{1}{16}$ " proj.
 $1\frac{3}{16}$ " (30 mm) dia. $\frac{15}{16}$ " proj.
 $1\frac{3}{8}$ " (35 mm) dia. $1\frac{3}{16}$ " proj.

9130 - US3 • SB

1" (25 mm) dia. $\frac{7}{8}$ " proj.
 $1\frac{3}{16}$ " (30 mm) dia. $1\frac{1}{16}$ " proj.
 $1\frac{3}{8}$ " (35 mm) dia. $1\frac{3}{16}$ " proj.

Also available in
US14 & US15.

9408 - US3 • US26 • SB

3" (76 mm) cc. $\frac{1}{32}$ " proj.

Also available in
US26D.



9441

9431

Solid Brass

9441 - US3 • US26 • SB

$3\frac{1}{2}$ " (89 mm) cc. $\frac{1}{8}$ " proj.

Also available in
**US10B, US14, US15,
 VB, VC & VI.**

9431 - US3 • US26 • SB

3" (76 mm) cc. $\frac{1}{16}$ " proj.

Also available in
**US10B, US14, US15,
 VB, VC & VI.**



9165

Solid Brass

9165 - US3 • US26 • US26D

1" (25 mm) dia. 1⁵/₁₆" proj.
 1³/₁₆" (30 mm) dia. 1⁹/₁₆" proj.
 1³/₈" (35 mm) dia. 1¹³/₁₆" proj.



9151

9153

9105

Solid Brass

9151 - US3 • US26

1" (25 mm) dia. ²⁹/₃₂" proj.
 1³/₁₆" (30 mm) dia. 1¹/₁₆" proj.

9153 - US3 • US26 •

US26D

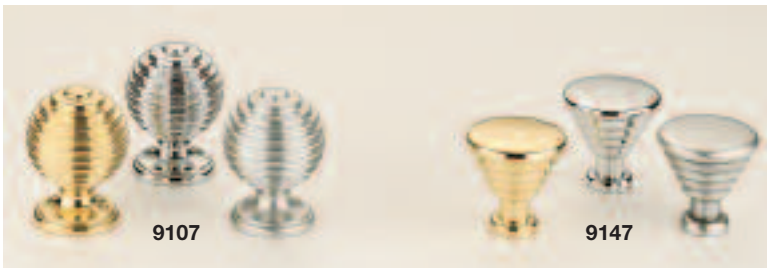
³/₄" (18 mm) dia. ¹⁵/₁₆" proj.
 1" (25 mm) dia. 1¹/₄" proj.

Also available in
US15.

9105 - US3 • US26

1³/₁₆" (30 mm) dia. 1¹/₃₂" proj.
 1³/₈" (35 mm) dia. 1¹/₂" proj.

Also available in
**US26D, US10B, US14
 & US15.**



Solid Brass

9107 - US3 • US26 • US26D

1" (25 mm) dia. 1⁵/₁₆" proj.

1³/₁₆" (30 mm) dia. 1⁹/₁₆" proj.

9147 - US3 • US26 • US26D

1" (25 mm) dia. 1" proj.

1³/₁₆" (30 mm) dia. 1³/₁₆" proj.



Solid Brass with decorative faux screwheads

9451 - US3 • US26 • US26D

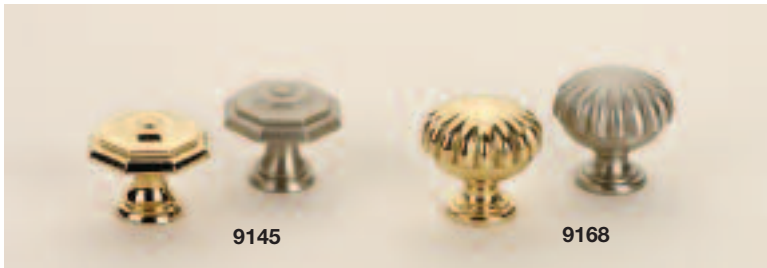
2¹/₂" (64 mm) cc.

1" proj.

3³/₄" (96 mm) cc.

1⁵/₁₆" proj.

Also available in
US14.



9145

9168

Solid Brass

9145 - US3 • US15

1" (25 mm) dia. $\frac{7}{8}$ " proj.
 1 $\frac{3}{16}$ " (30 mm) dia. 1" proj.
 1 $\frac{9}{16}$ " (40 mm) dia. 1 $\frac{3}{16}$ " proj.

Also available in
US10B, VB, VC & VI.

9168 - US3 • US15

1" (25 mm) dia. 1" proj.
 1 $\frac{3}{16}$ " (30 mm) dia. 1 $\frac{1}{8}$ " proj.
 1 $\frac{3}{8}$ " (35 mm) dia. 1 $\frac{3}{8}$ " proj.

Also available in
US10B, VB, VC & VI.



9454

Solid Brass with decorative faux screwheads

9454

**US3 • US14 • US15
 VI • VC • VB**

2 $\frac{1}{2}$ " (64 mm) cc. 3 $\frac{5}{8}$ " (92 mm) width 1 $\frac{9}{16}$ " (40 mm) height 1 $\frac{5}{16}$ " (24 mm) proj.

Also available in
US10B.



9416

Solid Brass

9416 - US3 • US26/3 • 684/3 • US15/3

2" (51 mm) cc.

3¹/₁₆" (78 mm) Overall Base

1" proj.



9522

Solid Brass

9522 - US3 • US26 • US26D

4" (102 mm) cc.

1" proj.

7¹/₂" (191 mm) cc.

1" proj.

Also available in
US15.



9400

Solid Brass

9400 - US3 • US26 • US26D

2½" (64 mm) cc. 1" proj.

3¾" (96 mm) cc. 1" proj.

Also available in
US10B & US15.



9419

Solid Brass

9419 - US3 • US26 • US26D

2½" (64 mm) cc. 1³/₁₆" proj.

3¾" (96 mm) cc. 1" proj.



Solid Brass

**9461/48 - US3 • US26 • US26D
US15**
1⁷/₈" (48 mm) length 1³/₁₆" proj.

9523 - US3 • US26 • US26D • US15
1³/₁₆" (30 mm) length 1⁵/₁₆" proj.

Also available in
US10B.



Solid Brass

9461 - US3 • US26 • US26D • US15
4" (100 mm) cc. 1³/₁₆" proj.
6¹/₂" (165 mm) cc. 1¹/₄" proj.

Also available in
US10B.



9406

Solid Brass

9406 - US3 • US26 • US26D • US15

3½" (89 mm) cc. 15/16" proj.

6½" (165 mm) cc. 1" proj.



9464

Solid Brass

9464 - US3 • US26 • US26D • US15

4" (100 mm) cc. 1½" proj.

5" (125 mm) cc. 1½" proj.

Also available in
US14.



Solid Brass

9430 - VI • VC • VB

1" (25 mm) dia. 1" proj.
 1¼" (32 mm) dia. 1¼" proj.
 1⅝" (41 mm) dia. 1⅞" proj.

Also available in
**US3, US26, SB,
 US10B, US14 & US15.**

9100 - VI • VC • VB

1" (25 mm) dia. ⅞" proj.
 1⅞" (31 mm) dia. 1⅞" proj.
 1⅞" (40 mm) dia. 1⅞" proj.

Also available in
**US3, US26, US26D,
 US10B, US14 & US15.**



Solid Brass

9441 - VI • VC • VB

3½" (89 mm) cc. 1⅜" proj.

Also available in
**US3, US26, SB,
 US10B, US14 & US15.**

9431 - VI • VC • VB

3" (76 mm) cc. 1⅞" proj.

Also available in
**US3, US26, SB,
 US10B, US14 & US15.**



Solid Brass

9141 - VI • VC • VB

1³/₁₆" (30 mm) dia. 1" proj.
 1⁹/₁₆" (40 mm) dia. 1³/₁₆" proj.

9163 - VI • VC • VB

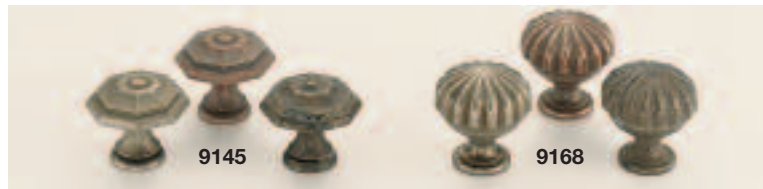
1³/₁₆" (30 mm) dia. 5/8" proj.
 1³/₈" (35 mm) dia. 1" proj.
 1⁹/₁₆" (40 mm) dia. 1¹/₈" proj.

Also available in **US3, US26, SB, US10B, US14 & US15.**

9102 - VI • VC • VB

1" (25 mm) dia. 1" proj.
 1³/₁₆" (30 mm) dia. 1¹/₈" proj.
 1⁹/₁₆" (40 mm) dia. 1⁷/₁₆" proj.

Also available in **US3, US26, US10B, US14 & US15.**



Solid Brass

9145 - VI • VC • VB

1" (25 mm) dia. 7/8" proj.
 1³/₁₆" (30 mm) dia. 1" proj.
 1⁹/₁₆" (40 mm) dia. 1³/₁₆" proj.

Also available in
US3, US10B & US15.

9168 - VI • VC • VB

1" (25 mm) dia. 1" proj.
 1³/₁₆" (30 mm) dia. 1¹/₈" proj.
 1³/₈" (35 mm) dia. 1³/₈" proj.

Also available in
US3, US10B & US15.



Solid Brass

7434 - US3 • SB • US15A

1 $\frac{1}{8}$ " (28 mm) dia. 1" proj.
1 $\frac{3}{8}$ " (35 mm) dia. 1 $\frac{3}{16}$ " proj.
1 $\frac{5}{8}$ " (42 mm) dia. 1 $\frac{1}{4}$ " proj.

7436 - US3 • SB • US15A

1" (25 mm) dia. 1 $\frac{3}{16}$ " proj.
1 $\frac{3}{16}$ " (30 mm) dia. 1" proj.
1 $\frac{9}{16}$ " (40 mm) dia. 1 $\frac{3}{16}$ " proj.

Also available in
US14.



Solid Brass

7430 - US3 • SB • US15A

1 $\frac{3}{16}$ " (30 mm) dia. 1 $\frac{1}{8}$ " proj.
1 $\frac{1}{2}$ " (38 mm) dia. 1 $\frac{1}{8}$ " proj.
1 $\frac{7}{8}$ " (47 mm) dia. 1 $\frac{1}{8}$ " proj.

7417 - US3 • SB • US15A

1 $\frac{1}{8}$ " (28 mm) dia. 1" proj.
1 $\frac{3}{8}$ " (35 mm) dia. 1 $\frac{1}{8}$ " proj.
1 $\frac{5}{8}$ " (42 mm) dia. 1 $\frac{3}{16}$ " proj.



7420

7435

Solid Brass

7420 - US3 • SB • US15A

1 $\frac{1}{8}$ " (28 mm) dia. $\frac{13}{16}$ " proj.

1 $\frac{5}{16}$ " (33 mm) dia. 1" proj.

1 $\frac{13}{16}$ " (46 mm) dia. 1 $\frac{3}{16}$ " proj.

7435 - US3 • SB • US15A

1" (25 mm) dia. $\frac{13}{16}$ " proj.

1 $\frac{3}{16}$ " (30 mm) dia. 1" proj.

1 $\frac{9}{16}$ " (40 mm) dia. 1 $\frac{3}{16}$ " proj.



7105

7432

Solid Brass

7105 - US3 • SB • US15A

1 $\frac{3}{16}$ " (30 mm) dia. 1" proj.

1 $\frac{9}{16}$ " (40 mm) dia. 1 $\frac{3}{16}$ " proj.

7432 - US3 • SB • US15A

* 3" (76 mm) cc. 1 $\frac{3}{8}$ " proj.

3 $\frac{1}{2}$ " (89 mm) cc. 1 $\frac{9}{16}$ " proj.

*Also available in
US14.



4341

*Crafted in Transparent (T) or Satin (S) glass, and colored clear or colored frosted glass.
Available colors are Rose (RS), Azure (AZ) or Jade (JA).*

4341 - Bases in US3 or US26

1 ³ / ₁₆ " (30 mm) dia.	1 ³ / ₁₆ " proj.
1 ⁹ / ₁₆ " (40 mm) dia.	1 ³ / ₁₆ " proj.

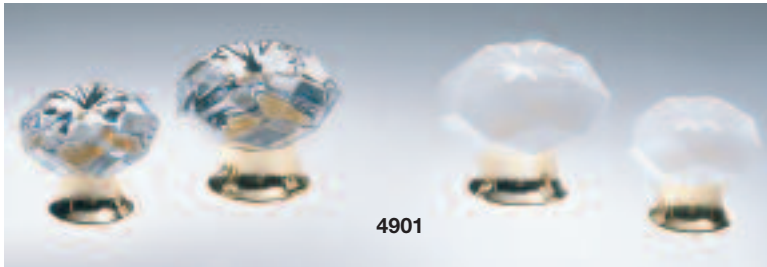


4405

*Crafted in Transparent (T) or Satin (S) glass, and colored clear or colored frosted glass.
Available colors are Rose (RS), Azure (AZ) or Jade (JA).*

4405 - Bases in US3 or US26

1" (25 mm) dia.	1 ³ / ₈ " proj.
1 ³ / ₁₆ " (30 mm) dia.	1 ⁹ / ₁₆ " proj.



4901

Crafted in Transparent (T) or Satin (S) crystal.

4901 - Bases in US3 or US26

1³/₁₆" (30 mm) dia. 1" proj.

1⁹/₁₆" (40 mm) dia. 1³/₁₆" proj.



4909

Crafted in Transparent (T) glass.

4909 - Bases in US3 or US26

1³/₁₆" (30 mm) dia. 1³/₁₆" proj.

1³/₈" (35 mm) dia. 1" proj.

1³/₄" (45 mm) dia. 1³/₁₆" proj.

Decorative Drop Pulls

9412



Solid Brass

9412

US3 • SB
VB • VC • VI

3⁹/₁₆" (90 mm) cc.

Backplate: 4¹/₂" x 1³/₄" o.a.

9420



Solid Brass

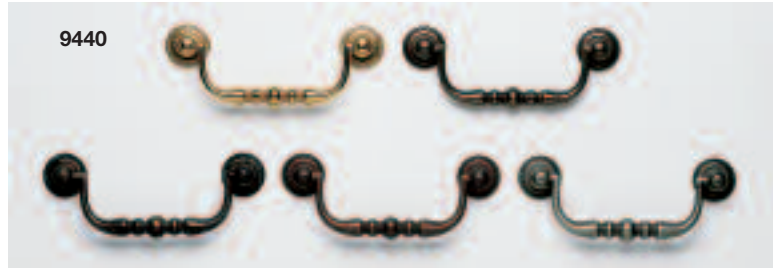
9420

US3 • SB
VB • VC • VI

3" (76 mm) cc.

Backplate: 1¹/₈" dia.

4" x 1⁵/₈" o.a.



Solid Brass

9422

**US3 • VB • VI
SB • VC**

1¹/₈" dia.

1³/₈" x 2¹/₂" o.a.

Solid Brass

9440

**US3 • SB
VB • VC • VI**

3⁷/₈" (98 mm) cc.

Backplate: 1" dia.

4³/₄" x 2" o.a.



Solid Brass

9447 SB • VC
 US3 • VB • VI

Backplate: 1³/₈" x 4" o.a.



Solid Brass

9448 US3 • SB
 VB • VC • VI

2¹/₂" (64 mm) cc.

Backplate: 4" x 1³/₄" o.a.

9466



Solid Brass

9466

**US3 • SB
VB • VC • VI**

Backplate: $\frac{7}{8}$ " dia.

$2\frac{1}{4}$ " x $1\frac{7}{8}$ " o.a.

9638



Solid Brass

9638

**US3 • SB
VB • VC • VI**

$2\frac{9}{16}$ " (65 mm) cc.

Backplate: $3\frac{3}{16}$ " x $2\frac{1}{2}$ " o.a.

Stainless Steel

Stainless Steel Collection

Our stainless steel line of cabinet knobs and pulls, along with larger-scale door pulls, is available in a wide array of styles and sizes. Fabricated from high-grade stainless steel, these products not only have a beautiful finish, but are corrosion- and tarnish-resistant as well. Omnia's stainless steel designs are sure to impart crisp, contemporary styling wherever they are employed.

Cabinet Hardware

Pulls



9100 - US32D

1" (25 mm) dia. 7/8" proj.
 1 3/16" (30 mm) dia. 1 1/8" proj.

9153 - US32D

3/4" (18 mm) dia. 1" proj.
 1 3/16" (21 mm) dia. 1 1/8" proj.

9180 - US32D

1" (25 mm) dia. 1 1/8" proj.
 1 3/16" (30 mm) dia. 1 1/4" proj.

9181 - US32D

3/4" (20 mm) dia. 1" proj.
 15/16" (24 mm) dia. 1 3/16" proj.

9449



9449 - US32D

10 mm dia.

3 ³ / ₄ " (96 mm) cc.	1 ¹ / ₈ " proj.	4 ⁵ / ₈ " oa.
5" (128 mm) cc.	1 ³ / ₁₆ " proj.	5 ⁷ / ₈ " oa.
7 ⁵ / ₈ " (192 mm) cc.	1 ³ / ₈ " proj.	8 ³ / ₄ " oa.
12 ⁵ / ₈ " (320 mm) cc.	1 ³ / ₈ " proj.	14 ⁹ / ₁₆ " oa.

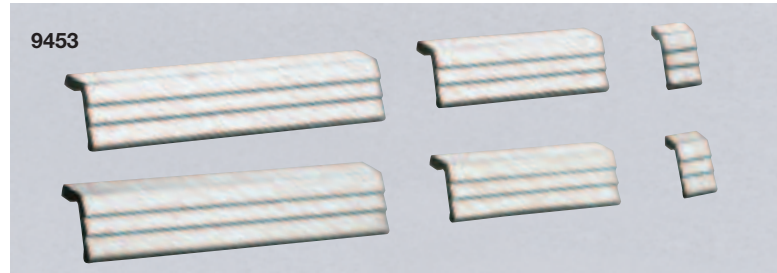
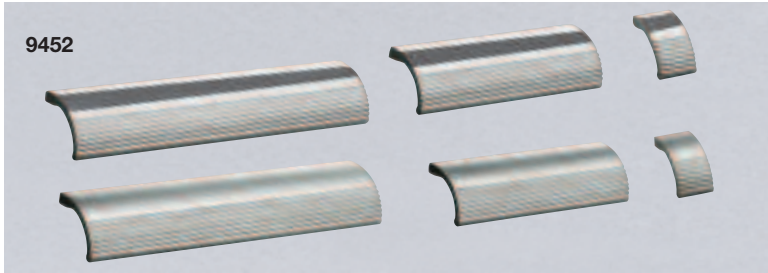
9450



9450 - US32D

10 mm dia.

3 ³ / ₄ " (96 mm) cc.	1 ¹ / ₈ " proj.	4 ⁵ / ₈ " oa.
5" (128 mm) cc.	1 ³ / ₁₆ " proj.	5 ⁷ / ₈ " oa.
7 ⁵ / ₈ " (192 mm) cc.	1 ³ / ₈ " proj.	8 ³ / ₄ " oa.
12 ⁵ / ₈ " (320 mm) cc.	1 ³ / ₈ " proj.	14 ⁹ / ₁₆ " oa.



9452 - US32 • US32D

Single hole mount	1 ¹ / ₈ " proj.	1 ³ / ₁₆ " oa.
3 ¹ / ₂ " (89 mm) cc.	1 ¹ / ₈ " proj.	4 ⁵ / ₈ " oa.
6" (152 mm) cc.	1 ¹ / ₈ " proj.	7 ¹ / ₈ " oa.

9453 - US32 • US32D

Single hole mount	1 ¹ / ₈ " proj.	1 ³ / ₁₆ " oa.
3 ¹ / ₂ " (89 mm) cc.	1 ¹ / ₈ " proj.	4 ⁵ / ₈ " oa.
6" (152 mm) cc.	1 ¹ / ₈ " proj.	7 ¹ / ₈ " oa.

9457



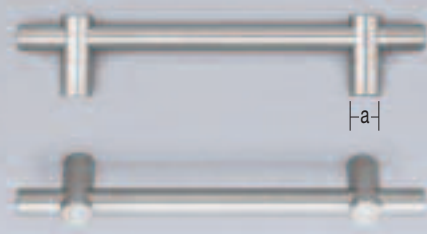
9457 - US32D

8 mm dia.

3 ³ / ₄ " (96 mm) cc.	1" proj.	5 ³ / ₈ " oa.
5" (128 mm) cc.	1" proj.	6 ⁵ / ₈ " oa.
6 ³ / ₈ " (160 mm) cc.	1" proj.	7 ⁷ / ₈ " oa.
7 ⁵ / ₈ " (192 mm) cc.	1" proj.	9 ¹ / ₈ " oa.

(The above center-to-centers are adjustable)

9458



9458 - US32D

12 mm dia.

5" (128 mm) cc.	1 ¹ / ₄ " proj.	7 ¹ / ₄ " oa.
7 ⁵ / ₈ " (192 mm) cc.	1 ¹ / ₄ " proj.	9 ³ / ₄ " oa.
12 ⁵ / ₈ " (320 mm) cc.	1 ¹ / ₄ " proj.	14 ¹⁵ / ₁₆ " oa.
17 ⁵ / ₈ " (448 mm) cc.	1 ¹ / ₄ " proj.	20 ¹ / ₈ " oa.

(The above center-to-centers are adjustable)

9533



9533 - US32D

10 mm dia.

2⁹/₁₆" (64 mm) cc.

1¹/₈" proj.

3⁵/₈" oa.

3³/₄" (96 mm) cc.

1³/₁₆" proj.

5³/₁₆" oa.

5" (128 mm) cc.

1¹/₄" proj.

6³/₄" oa.

9537
(8 mm dia.)



9537 - US32D

8 mm dia.

3" (76 mm) cc.

1³/₁₆" proj.

4" (102 mm) cc.

1³/₁₆" proj.

5" (128 mm) cc.

1³/₁₆" proj.

9538
(10 mm dia.)



9538 - US32D

10 mm dia.

3" (76 mm) cc.

1³/₈" proj.

4" (102 mm) cc.

1³/₈" proj.

5" (128 mm) cc.

1³/₈" proj.



720 - US32D
30 mm dia.

8⁵/₈" (220 mm) cc.

2³/₄" proj.

15" oa.

721



721 - US32D

20 mm dia.

15³/₄" (400 mm) cc.

2⁹/₁₆" proj.

17⁵/₁₆" oa.

31¹/₂" (800 mm) cc.

2⁹/₁₆" proj.

33" oa.

722



$a = 1''$ dia.

$b = 3/8''$

$c = 1''$

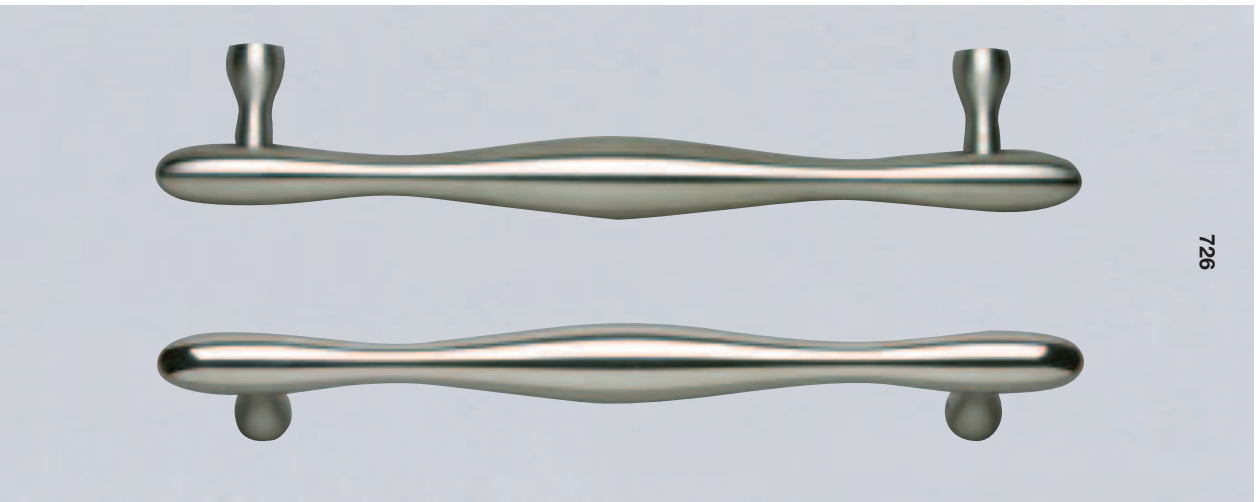
722 - US32D

15³/₄" (400 mm) cc.

2⁹/₁₆" proj.

17⁵/₁₆" oa.

726



726 - US32 • US32D

1 1³/₄" (300 mm) cc.

2³/₄" proj.

1 4¹⁵/₁₆" oa.

728



PROFILE

728 - US32 • US32D15³/₄" (400 mm) cc.2¹/₆" proj.19¹/₂" oa.



4019 - US32D

4019/300	8" cc.	2 ⁵ / ₈ "	proj.	9" oa.
4019/400	12" cc.	2 ¹⁵ / ₁₆ "	proj.	13 ¹ / ₄ " oa.
4019/500	16" cc.	3 ³ / ₈ "	proj.	17 ¹ / ₂ " oa.

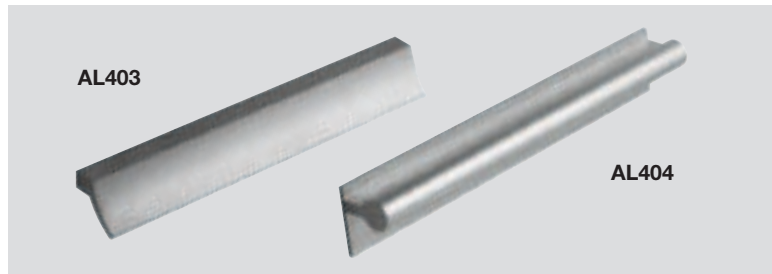
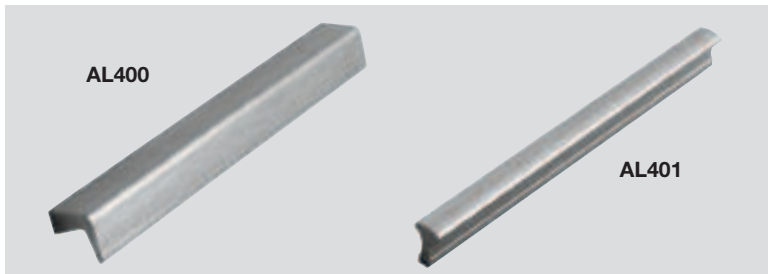
4010



4010 - US32D

4010/300	8" cc.	2 ⁵ / ₈ "	proj.	9" oa.
4010/400	12" cc.	2 ¹⁵ / ₁₆ "	proj.	13 ¹ / ₄ " oa.
4010/500	16" cc.	3 ³ / ₈ "	proj.	17 ¹ / ₂ " oa.

Aluminum



AL400 - US28

3" (76 mm) cc. $\frac{15}{16}$ " proj. $4\frac{5}{16}$ " oa.

6" (152 mm) cc. $\frac{15}{16}$ " proj. $9\frac{7}{16}$ " oa.

AL401 - US28

3" (76 mm) cc. $\frac{7}{8}$ " proj. $4\frac{5}{16}$ " oa.

6" (152 mm) cc. $\frac{7}{8}$ " proj. $9\frac{7}{16}$ " oa.

AL403 - US28

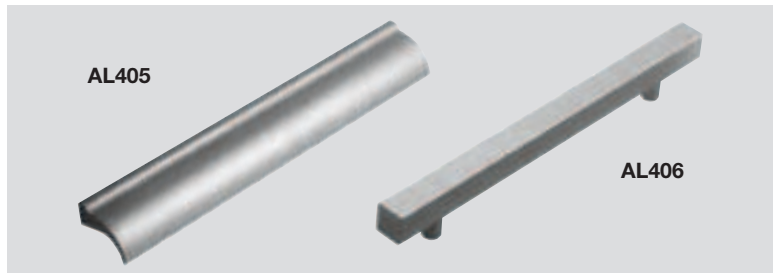
3" (76 mm) cc. 1" proj. $4\frac{5}{16}$ " oa.

6" (152 mm) cc. 1" proj. $9\frac{7}{16}$ " oa.

AL404 - US28

3" (76 mm) cc. $1\frac{1}{16}$ " proj. $4\frac{5}{16}$ " oa.

6" (152 mm) cc. $1\frac{1}{16}$ " proj. $9\frac{7}{16}$ " oa.



AL405 - US28

3" (76 mm) cc. 1" proj. 4⁵/₁₆" oa.
 6" (152 mm) cc. 1" proj. 9⁷/₁₆" oa.

AL406 - US28

3¹/₂" (89 mm) cc. 1³/₁₆" proj. 5¹/₂" oa.
 6" (152 mm) cc. 1³/₁₆" proj. 8" oa.
 9" (229 mm) cc. 1³/₁₆" proj. 12⁵/₈" oa.



AL407 - US28

5" (127 mm) cc. 1⁹/₁₆" proj. 5⁷/₁₆" oa.
 6¹/₄" (159 mm) cc. 1⁹/₁₆" proj. 6¹¹/₁₆" oa.
 12¹/₂" (318 mm) cc. 1⁹/₁₆" proj. 12¹⁵/₁₆" oa.

AL409 - US28

5" (127 mm) cc. 1⁷/₁₆" proj. 5¹/₂" oa.
 7¹/₂" (190 mm) cc. 1⁷/₁₆" proj. 8" oa.
 12¹/₂" (318 mm) cc. 1⁷/₁₆" proj. 12⁵/₈" oa.

AL599 - US28

5" (128 mm) oa. 5⁵/₈" proj.
 7⁷/₈" (200 mm) oa. 5⁵/₈" proj.

Shaded area recessed into door/drawer front)



Box 330 • Cedar Grove, NJ 07009
Tel: (973) 239-7272 • Fax: (800) 542-7611
www.OmniaIndustries.com

