

# CompX<sup>®</sup>

---

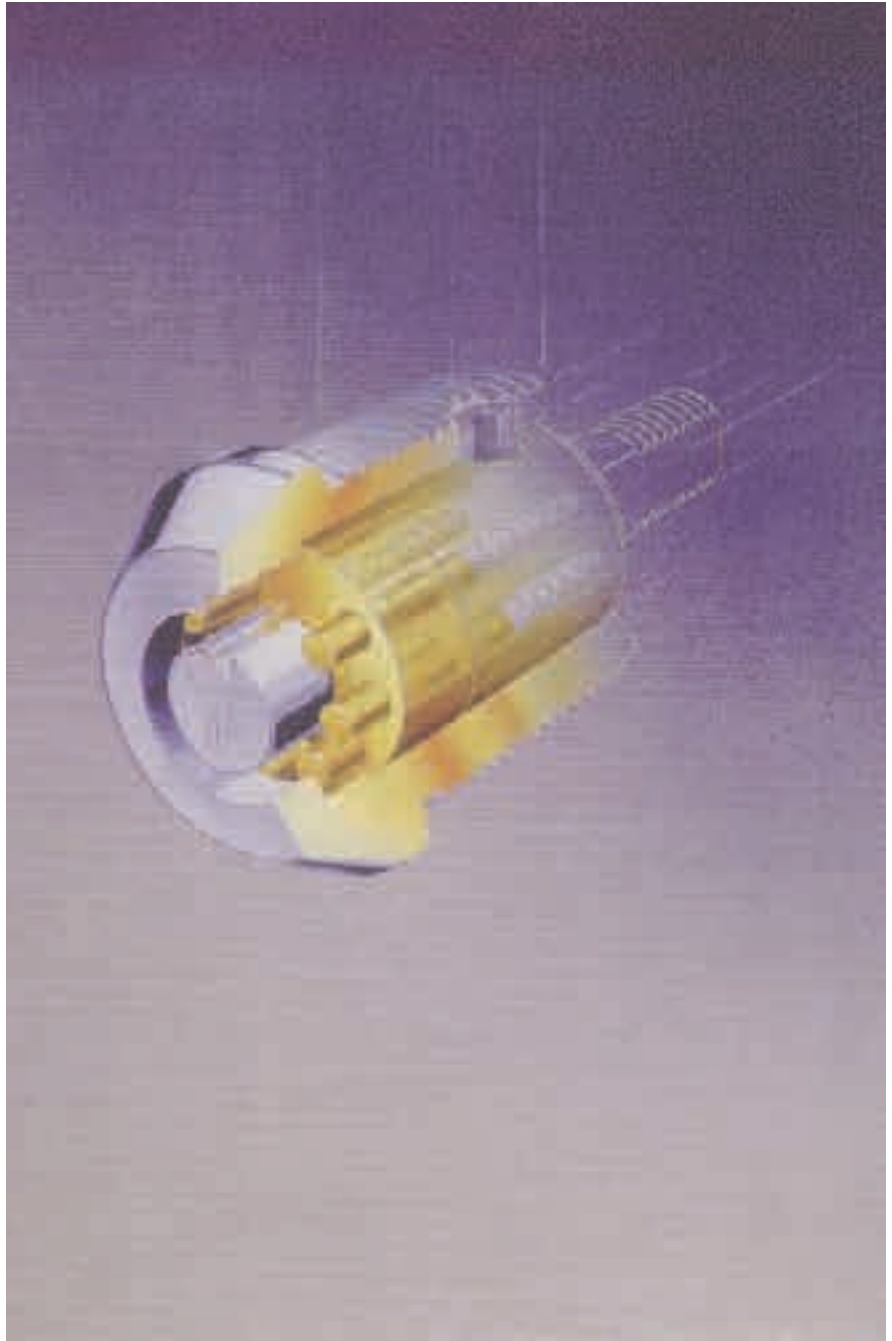
## CHICAGO



**STOCK  
LOCKS<sup>®</sup>**  
Standard Locks for Special Needs

**A CUT ABOVE.**

*The proven Ace II®  
original tubular lock,  
with its all brass  
construction and  
patented assembly  
process, provides  
professional locksmiths  
and their customers  
with excellent security  
at value prices.*



**CompX**  

---

**CHICAGO**

**Over 80 years of service to the security industry.**

# The Family Of...



PO Box 200  
Mauldin, SC 29662  
Phone: 864-297-6655 Fax: 864-297-9987  
E-Mail: [national@compx.com](mailto:national@compx.com)  
[compx.com](http://compx.com)



715 Center Street  
Grayslake, IL 60030  
Phone: 847-752-2500 Fax: 847-752-2419  
E-Mail: [fort@compx.com](mailto:fort@compx.com)  
[compx.com](http://compx.com)

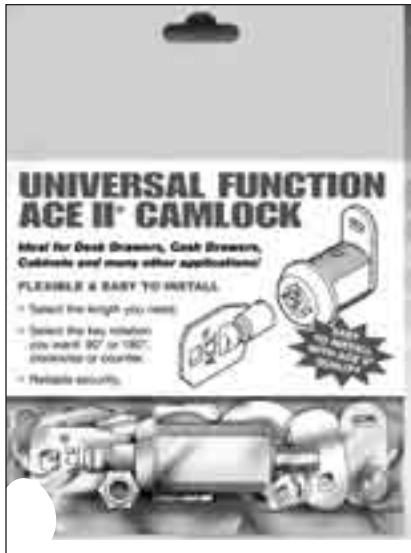


715 Center Street  
Grayslake, IL 60030  
Phone: 847-752-2600 Fax: 847.752.2420  
E-Mail: [timberline@compx.com](mailto:timberline@compx.com)  
[compx.com](http://compx.com)



PO Box 200  
Mauldin, SC 29662  
Phone: 864-297-6655 Fax: 864-297-9987  
E-Mail: [chicago@compx.com](mailto:chicago@compx.com)  
[compx.com](http://compx.com)

# ACE II® CAM TYPE UNIVERSAL FUNCTION LOCKS



## Conveniently Packaged! More Versatile Than Ever!

- **Effective Retail Display**—Ready to “Hang,” these new packages include easy to follow instructions for your customers’ replacement lock needs.
- **Convenient Field Use**—The Universal Function package includes everything you need for quick, easy installation of these original factory-quality locks.
- **All brass construction.**
- Patented Ace II® assembly.
- Center plug contains anti-drill pin for added security.
- Standard finish - Polished Nickel.
- Furnished with straight locking cams which can be mounted vertically or horizontally and also a 1/4" offset cam. Cams are 1/8" thick X 3/4" wide.
- Two keys furnished per lock.

**STOCK  
LOCKS**

### Specifications:

**KEY ROTATION/REMOVAL** is determined by the **STOP CAM** you select and how it is positioned.

- A. 180° Clockwise Rotation - Key removal at 12 O’Clock.
- B. 180° Counter Clockwise Rotation - Key removal at 12 O’Clock.
- C. 90° Clockwise Rotation - Key removal at 12 & 3 O’Clock.
- D. 90° Counter Clockwise Rotation - Key removal at 12 & 9 O’Clock.

LOCKING CAM (SEE OPTIONS BELOW)

STOP CAM (SEE OPTIONS TO LEFT)

LARGE BODY NUT

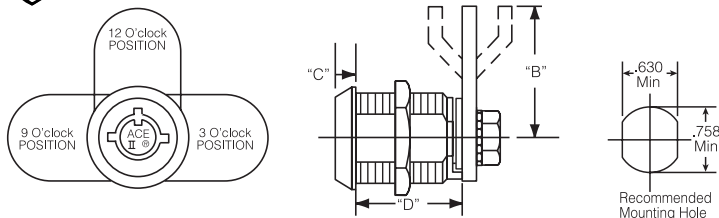
ANCHOR WASHER

LOCK CYLINDER

SELF LOCKING HEX NUT

### To order:

Call your local distributor and specify lock number which corresponds with dimensions required.



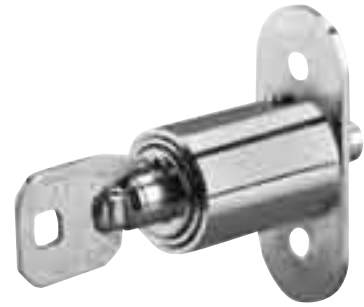
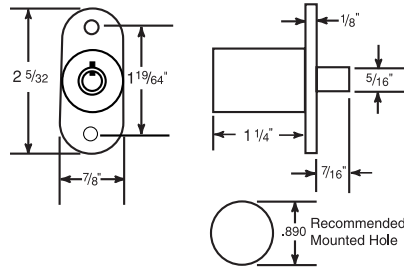
(Standard Package of 25)

Lock No.	“B” Dim.	“C” Dim.	“D” Dim.	Key Numbers Available / Reference Numbers						
<b>C4198</b>	1 <sup>1</sup> / <sub>8</sub> 28.6mm	23 <sup>3</sup> / <sub>64</sub> 9.04mm	19 <sup>3</sup> / <sub>32</sub> 15.1mm	<b>KD</b> 99589	7525 99588	<b>6224</b> 99590	<b>6225</b> 99591	6226 99592	6227 99593	<b>7302</b> 99684
<b>C4153</b>	1 <sup>1</sup> / <sub>8</sub> 28.6mm	1 <sup>1</sup> / <sub>4</sub> 6.4mm	11 <sup>1</sup> / <sub>16</sub> 17.5mm	<b>KD</b> 99251	<b>7525</b> 99250	<b>PL-505</b> 99252	<b>7302</b> 99253	6301 99594	6302 99595	6602 99624
<b>C4153</b>	1 <sup>1</sup> / <sub>8</sub> 28.6mm	1 <sup>1</sup> / <sub>4</sub> 6.4mm	11 <sup>1</sup> / <sub>16</sub> 17.5mm	6029 99254	6030 99255	6031 99256	<b>6032</b> 99257	6303 99596	<b>6234</b> 99597	<b>PL910</b> 99625
<b>C4152</b>	1 <sup>1</sup> / <sub>8</sub> 28.6mm	13 <sup>3</sup> / <sub>64</sub> 5.2mm	15 <sup>1</sup> / <sub>16</sub> 23.8mm	<b>KD</b> 99241	7525 99240	<b>PL-505</b> 99242	<b>7302</b> 99243	6401 99598	6402 99599	<b>PL910</b> 99626
<b>4152</b>	1 <sup>1</sup> / <sub>8</sub> 28.6mm	13 <sup>3</sup> / <sub>64</sub> 5.2mm	15 <sup>1</sup> / <sub>16</sub> 23.8mm	6003 99244	6021 99245	6022 99246	6023 99247	6403 99600	6404 99601	6605 99627
<b>C4160</b>	1 <sup>1</sup> / <sub>8</sub> 28.6mm	13 <sup>3</sup> / <sub>64</sub> 5.2mm	13 <sup>3</sup> / <sub>32</sub> 27.8mm	<b>KD</b> 99471	PL-960 99472	<b>PL-505</b> 99602	6501 99603	<b>6502</b> 99604	<b>6234</b> 99605	<b>7302</b> 99685

All part numbers shown in red are available through the STOCK LOCKS program.

# SLIDING DOOR LOCKS

- Reliable ACE II® cylinder can be keyed compatibly with other ACE II® models.
- Solid die cast housing and locking pin
- Retrofits most existing sliding door locks
- Easy cylinder removal for replacement or rekeying
- Available keyed alike, keyed different and keyed in groups
- Bright chrome finish
- Furnished with two keys per lock

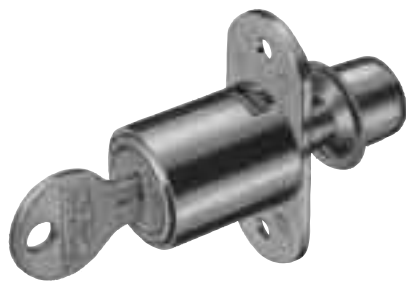


NO. C5170

ACE II®

Lock No. **C5170** (Standard Package of 10)

Reference No.	99135	99136	99137	99138	99139	99134
Keying	K/A	K/A	K/A	K/A	K/A	<b>KD</b>
	<b>7302</b>	<b>7525</b>	<b>6030</b>	<b>6303</b>	<b>6602</b>	



NO. C1770

Single Bitted

- Five disc tumbler plug in 7/8" diameter
- Die cast barrel
- No. 1770 utilizes a spring bolt which locks by pushing the cylinder in and released by turning the key 90° from locked (12 O'Clock) to unlocked (3 O'Clock) position.
- No. 1775 uses a rotating "T" type plunger operated by rotating the key 90° and pushing the plunger into the lock, or releasing to unlock.
- Keypull in locked and unlocked positions
- Standard finish—Satin Chrome
- Mounting plate is 5/64" X 7/8" X 2" with 1 1/2" between mounting hole centers
- Furnished with two keys per lock

Lock No. **C1770** (Standard Package of 10)

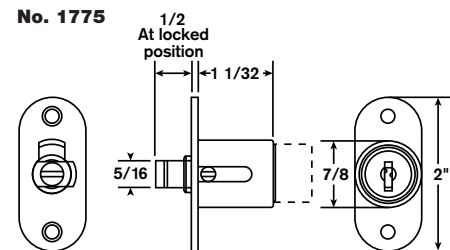
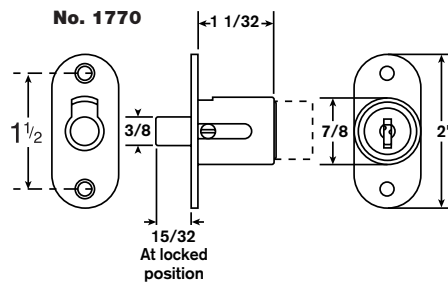
Reference No.	99072	99071
Keying	K/A	<b>KD</b>
	<b>1289</b>	<b>1454</b>

Lock No. 1775

Reference No.	99362	99361
Keying	K/A	Keyed
	1289	Various

Key Blank K-5 (Standard Package of 50)

Reference No.	99559



**STOCK  
LOCKS**

**CompX**  
**CHICAGO**

All part numbers shown in red are available through the STOCK LOCKS program.

# SERVICE PARTS KITS

## Ace® Factory Original Parts now in Convenient Service Kits for Locksmiths!

Ace® Locking Cam and Tumbler Service Kits from CompX Chicago save invaluable time!

**STOCK  
LOCKS**

They provide all the parts needed to service locks in one compact container. No more wasted trips back to the shop to find forgotten tumblers, springs...it's all right at your fingertips.

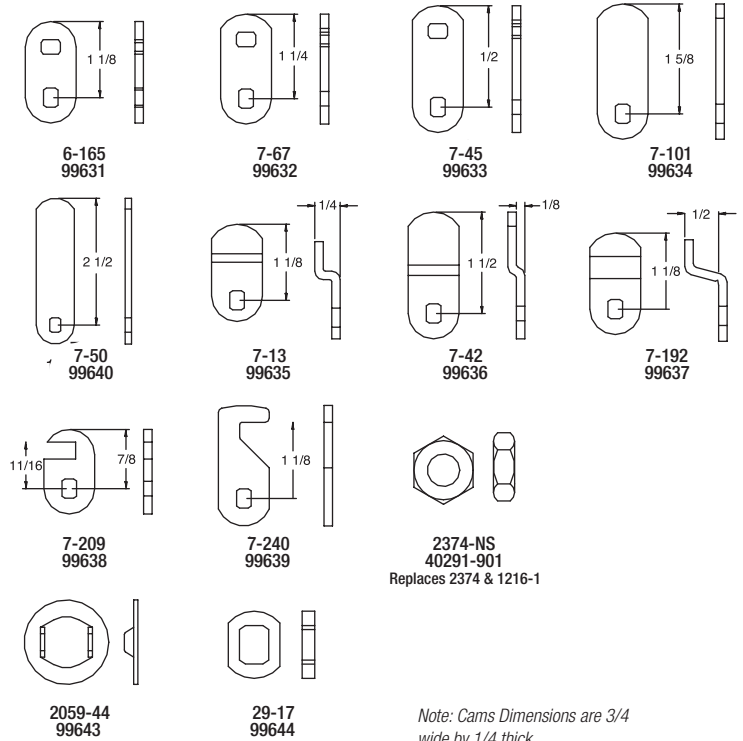
Single and Double Bitted Service Kits also available (see page 7).

Contact your local distributor to order and save both time and money!



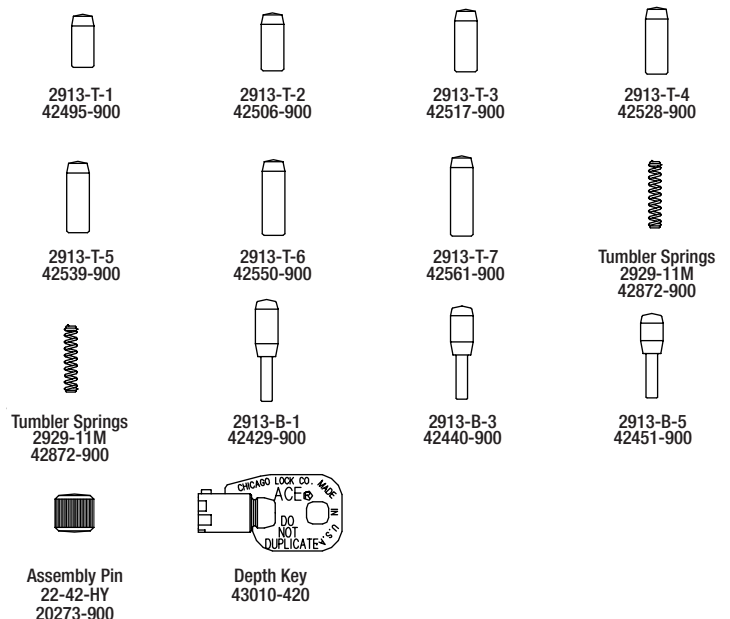
### Ace® Locking Cams Service Kit

Part No. **D9629**



### Ace® Tumbler Service Kit

Part No. **D9630**



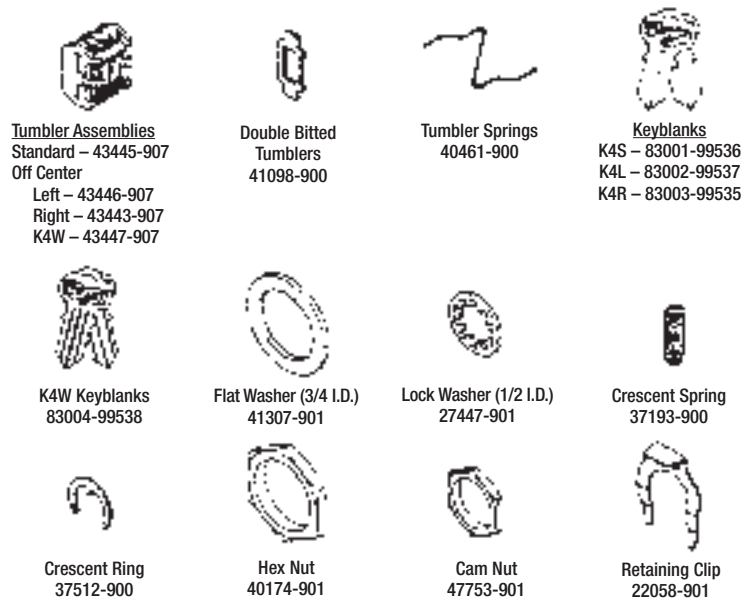
All part numbers shown in red are available through the STOCK LOCKS program.



Single Bitted Service Kit - Part No. **D9094**



Double Bitted Service Kit - Part No. **D9095**



**Replacement Parts for Service Kits**

Reference No.	Description	Std. Pkg.
99631	Ace Cam	10
99632	Ace Cam	10
99633	Ace Cam	10
99634	Ace Cam	10
99635	Ace Cam	10
99637	Ace Cam	10
99638	Ace Cam	10
99639	Ace Cam	10
99640	Ace Cam	10
99641	Hex Nut	25
99642	Lock Washer	25
99643	Mounting Washer	25
99644	Cam Adaptor	25

**GUIDE KEY SET**

**402 Cut Keys**

- Numbered from 2001 to 2576, but not in consecutive order. 2400 Series is not included.
- Order item **#D9402**.

**KF Series Cut Keys**

- Cut Keys for KF series only.
- Reference item #99404.

**KEY CODE BOOK**

**Coding For CompX Chicago's Most Popular Keys.**

- Binder includes coding for the most frequently used single bitted, double bitted and pin tumbler keys.
- Order item **#D9401**.

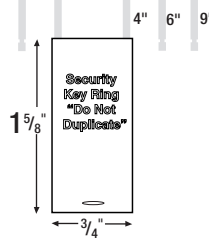
All part numbers shown in red are available through the **STOCK LOCKS** program.

# KEYLOC™ / STEELCASE® REPLACEMENT PLUGS



## KeyLOC™ - The NEW tamper evident key ring from CompX Chicago.

- Vinyl coated steel cables – the same used in the aircraft industry – resistant to cutting. If cut, cable is non-repairable.
- Cables are available in 3 sizes: 4", 6" and 9" loops. Key ring loops hold 10 to 50 keys.
- Retainer pins fit securely into patented ACE II® Cylinder nested in lightweight aluminum housing. Tampering of any kind is revealed immediately.
- Security ring clearly warns "DO NOT DUPLICATE."
- Easy 1/4 turn cable installation.
- All units supplied with 2 keys each. Includes security seal.
- Scratch resistant vinyl cover available soon. Call for more information.



**STOCK  
LOCKS**

Lock #	Ref.#	Key #	Std. Pkg.
<b>C4201</b>	99260	<b>KD</b>	1
	99261	<b>6201</b>	Consists of 4", 6" & 9" Cable Assembly
	99263	<b>6230</b>	
	99264	<b>6248</b>	
	99265	<b>6255</b>	
<b>C4201-4</b>	99167	<b>KD</b>	5
	99168	<b>6201</b>	Consists of 4" Cable Assembly
	99169	<b>6230</b>	
	99170	<b>6248</b>	
	99171	<b>6255</b>	
<b>C4201-6</b>	99172	<b>KD</b>	5
	99173	<b>6201</b>	Consists of 6" Cable Assembly
	99174	<b>6230</b>	
	99175	<b>6248</b>	
	99176	<b>6255</b>	
<b>C4201-9</b>	99177	<b>KD</b>	1
	99178	<b>6201</b>	Consists of 9" Cable Assembly
	99179	<b>6230</b>	
	99187	<b>6248</b>	
	99188	<b>6255</b>	
<b>4201-LC</b>	99195	<b>KV</b>	1
	99196	<b>6201</b>	
	99197	<b>6230</b>	
	99198	<b>6248</b>	
	99199	<b>6255</b>	
<b>56193</b>	<b>4201-5A</b>	Cable only (4" Loop)	
<b>56194</b>	<b>4201-5B</b>	Cable only (6" Loop)	
<b>56195</b>	<b>4201-5C</b>	Cable only (9" Loop)	
<b>137CLC</b>	<b>99534</b>	50 Key Blanks	

## STEELCASE® REPLACEMENT PLUGS



**Complete Plug Assembly**  
P1076-Series



**Plug-Sub Assembly**  
CP1076-Series (Retaining Tumbler Only)

### Take advantage of a tremendous replacement market. Millions of Steelcase desk locks are now in use!

- Retrofits in seconds with the use of the removal tool.
- 6 disc tumbler construction easily rekeyable with 99094-000 Service Kit.
- Set up your own code systems for each customer with the CP-1076-90 Sub-assembled plug and 99094-000 Service Kit.
- Sold in packages of 10.

Description	Lock No.	Reference No.
Loaded Plug w/2 Keys (Specify Keyway K101-K104 or our choice)	P-1076	
	Keyed Alike	99662
	Keyed Different	99656
Un-Loaded Plug (No Keys / Retainer Tumbler only)	Keyed in Groups	99657
	CP-1076-90	
	Keyway	
	K101	99658
	K102	99659
	K103	99660
	K104	99661
Removal Tool	K-100 RK68	N/A

Steelcase is a registered trademark of Steelcase, Inc., Grand Rapids, Michigan.

All part numbers shown in red are available through the STOCK LOCKS program.

# "T" HANDLE ASSEMBLIES

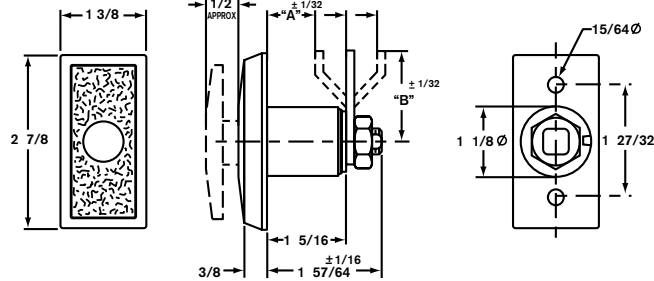


NO. OU-4260

Handle and Cylinder dimensions do not conform to NAMA dimensional standards.

### For Limited Spaces.

- Accepts Ace II® cylinder No. 4260-19. See page L8.
- To use flat key cylinder No. P-1060-19, order "T" Handle No. OU-4260-6T.
- Available with 4260-19 or P-1060-19 cylinders only.
- Standard finish — Chrome.
- Customer must furnish "A" and "B" Dimension.

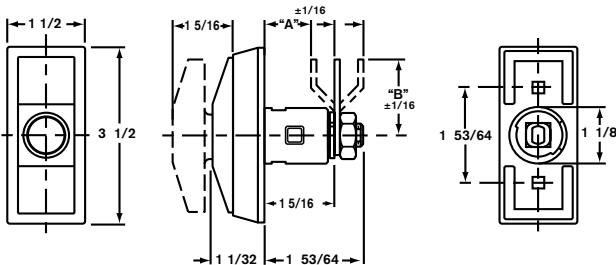


### New! 4200 Series. Retrofits OU-4260 & OU-5560 "T" Handles.

- Increased security for limited spaces.
- Accepts standard & long cylinder locks which meet NAMA dimensional standards.
- Available in 1/4 turn, clockwise or counter-clockwise.
- Locking cams can be manufactured per customer requirement, cam not included.
- Available 90° or 180° rotation.
- Textured finish for scratch resistance. Standard finish — Chrome.
- Black finish available. Minimum order may apply.



NO. OU-4200-NA



### STANDARD SCREW TYPE

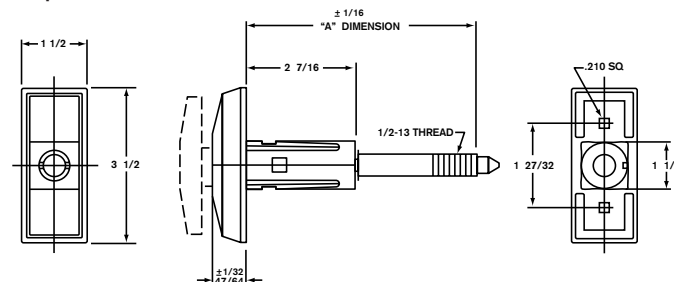


NO. OU-4265-NA

All "T" Handles with suffix NA will accept cylinders which meet NAMA dimensional standards.

### Easily Tighten Door Without Losing Seal.

- When fully extended, handle is free wheeling to 360°.
- When partially depressed, handle is free wheeling to 120°.
- Furnished with 1/2 x 13 threaded stud.
- Front design has built up flange and tapered "T" Handle construction.
- Accepts standard & long cylinders which meet NAMA dimensional standards.
- Textured finish for scratch resistance. Standard finish — Chrome.
- Customer must specify "A" Dimension.
- Minimum order may apply for non-standard stud lengths.
- Optional stainless steel handle available.



**NOTE: When ordering T-Handles specify all information for proper stud.**

# "T" HANDLE CYLINDER LOCKS

## STOCK LOCKS

### CYLINDER LOCKS

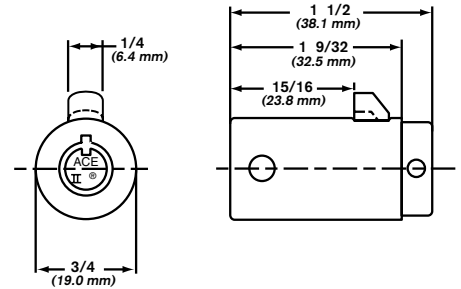


NO. C425519RL

#### C425519RL

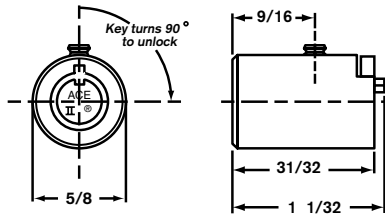
- 7 Pin tumbler.
- Brass locking bolt.
- Set screw hole for anti-pull feature when used in "T" Handle with set screw feature.
- Standard finish — Chrome.
- Thousands of combinations available.
- Furnished with 2 keys each.
- **Meets NAMA dimensional standards.**
- Available keyed alike, keyed different, keyed in groups.

(Standard package of 10)  
**KD, KA to SP802, SP803, SP804, L463**



#### C4260-19

- For use in OU-4260 "T" Handle only. See page 9.
- 7 pin tumbler.
- Brass locking pin.
- Standard finish — Chrome.
- Thousands of key combinations available.
- Furnished with 2 keys each.
- Available keyed alike, keyed different & keyed in groups.
- **KD, KA to L463**

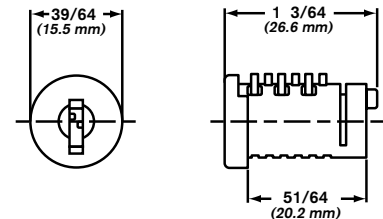


NO. C4260-19



NO. P-1060-19

- For use in OU-4260-6T "T" Handle only.
- 6 disc tumblers.
- Over 200 key combinations available.
- Furnished with 2 keys each.
- Master keying available at additional cost.



All part numbers shown in red are available through the STOCK LOCKS program.

# DOUBLE & SINGLE BITTED CAM LOCKS

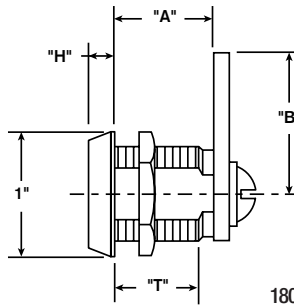


## DOUBLE BITTED

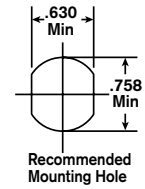
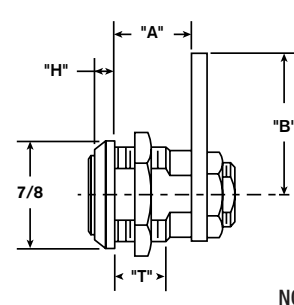


NO. C3186

- Eleven criss-cross blade tumbler plug in  $3/4$ " diameter.
- Die cast barrel with two flats —  $5/8$ " across.
- Key and cam rotation  $90^\circ$  from locked (12 O'Clock) to unlocked (3 O'Clock) position with keypull in locked position only.
- Straight cam furnished is  $1/8$ " thick X  $3/4$ " wide.
- Standard finish — Polish Nickel.
- Two keys furnished per lock.



1800 SERIES



Recommended Mounting Hole

NO. C3186 & C3205

(Standard Package of 25)

Lock No.	"A" Dim.	"B" Dim.	"H" Dim.	"T" Dim.	KD	KA #2001	KA #2007	KA
C3205	$7/16$ "	$1/8$ "	$13/64$ "	$15/64$ "	99201	99202	99203	KA #2141 - 99204
C3186	$5/8$ "	$1/8$ "	$5/32$ "	$13/32$ "	99191	99192	99193	KA #781 - 99194
C1801	$13/16$ "	$1/8$ "	$13/64$ "	$11/16$ "	99084	99085	99086	KA #2141 - 99087
C1802	$11/16$ "	$1/8$ "	$13/64$ "	$15/16$ "	99096	99097	99098	KA #2141 - 99099
1803	$13/16$ "	$1/8$ "	$13/64$ "	$17/64$ "	99104	99105	99106	KA #2141 - 99107
C1804	$11/2$ "	$1/8$ "	$13/64$ "	$113/32$ "	99114	99115	99116	KA #2141 - 99117

C3205 and C3186 Available KD, KA to 2001 and 2007.

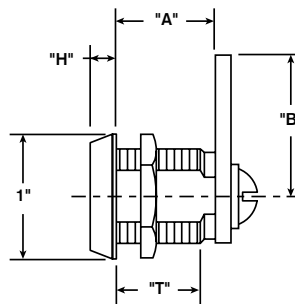
C1801 and C1804 Available KA only to 2001. C1802 Available KA to 2001 and 2007.

## SINGLE BITTED

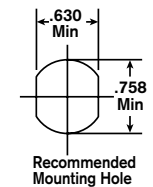
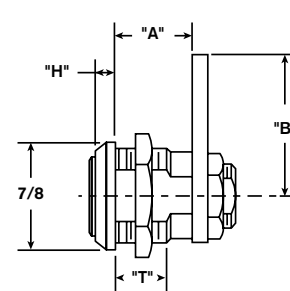


NO. C3786

- Five disc tumbler plug in  $3/4$ " diameter.
- Die cast barrel with two flats —  $5/8$ " across.
- Key and cam rotation  $90^\circ$  from locked (12 O'Clock) to unlocked (3 O'Clock) position with keypull in locked position only.
- Straight cam furnished is  $1/8$ " thick X  $3/4$ " wide.
- Standard finish — Polish Nickel
- Two keys furnished per lock.



1700 SERIES



Recommended Mounting Hole

NO. 3786

(Standard Package of 25)

Lock No.	"A" Dim.	"B" Dim.	"H" Dim.	"T" Dim.	KD	KA #1289	KA #1454
3705	$7/16$ "	$1/8$ "	$1/4$ "	$13/64$ "	99617	99618	99619
C3786	$5/8$ "	$1/8$ "	$13/64$ "	$13/32$ "	99211	99212	99213
C1701	$13/16$ "	$1/8$ "	$13/64$ "	$11/16$ "	99024	99025	99026
C1702	$11/16$ "	$1/8$ "	$13/64$ "	$15/16$ "	99034	99035	99036
C1703	$13/16$ "	$1/8$ "	$13/64$ "	$17/64$ "	99044	99045	99046
C1704	$11/2$ "	$1/8$ "	$13/64$ "	$113/32$ "	99054	99055	99056

C3786, C1703 and C1704 Available KD, KA to 1289 and 1454.

C1701 Available KA only to 1289 and 1454. C1702 Available KD and KA to 1454.

All part numbers shown in red are available through the STOCK LOCKS program.

# CompX Chicago KEYBLANKS

Genuine CompX Chicago key blanks are packed 50 per box.  
Order in multiples of 50.

**STOCK  
LOCKS**



**DK-4-L**  
Off Center Left  
99535



**DK-4**  
Center Groove  
99536



**DK-4-R**  
Off Center Right  
99537



**DK-4-W**  
"W" Milling  
99538



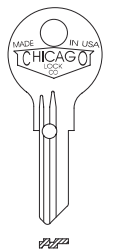
**DK-2-W**  
"W" Milling  
99539



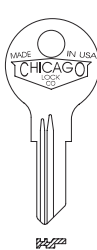
**DK-2**  
Center Groove  
99542



**DK-18**  
Thicker Blank  
99540



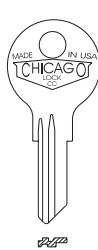
**DK-103-G**  
6-Tumbler  
99606



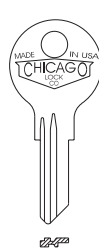
**DK-501**  
5-Tumbler  
83170



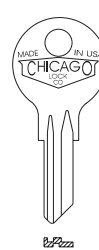
**DK-502**  
5-Tumbler  
83171



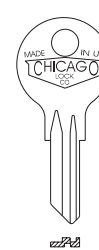
**DK-503**  
5-Tumbler  
83172



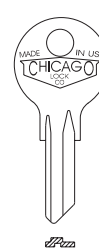
**DK-504**  
5-Tumbler  
83173



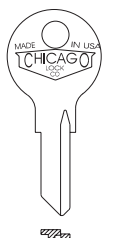
**DK-5**  
5-Tumbler  
99559



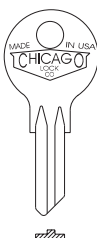
**DK-9**  
5-Tumbler  
99562



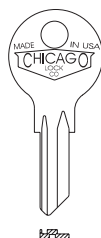
**DK-35**  
5-Tumbler  
99565



**DK-35-M**  
5-Tumbler  
99566



**DK-38**  
5-Tumbler  
99569



**DK-39**  
5-Tumbler  
99570



**DK-P-1**  
4-Pin Tumbler  
99574



**DK-P-2**  
4-Pin Tumbler  
99570



**DK-P-3**  
4-Pin Tumbler  
99576



**DK-P-4**  
4-Pin Tumbler  
99577

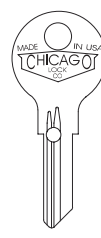


**DK-P-9**  
4-Pin Tumbler  
99581

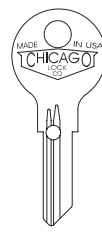


MADE IN U.S.A.  
137CLC  
CHICAGO LOCK CO.  
ACE® & ACE II®  
Keyblank  
99534  
D137-CLC

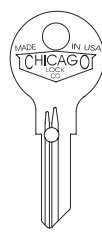
**GENUINE  
CHICAGO  
LOCK CO.  
KEY BLANKS  
DESIGNED FOR  
STEELCASE  
EQUIPMENT  
LOCKS.**



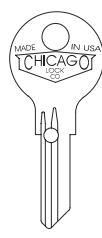
**DK-101-H**  
6-Tumbler  
99549



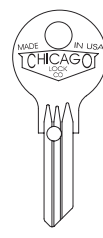
**DK-102-H**  
6-Tumbler  
99551



**DK-103-H**  
6-Tumbler  
99553



**DK-104-H**  
6-Tumbler  
99555



**DK-100-MH**  
6-Tumbler  
99557

Steelcase is a registered trademark of Steelcase, Inc., Grand Rapids, Michigan.

All part numbers shown in red are available through the STOCK LOCKS program.

# PADLOCKS

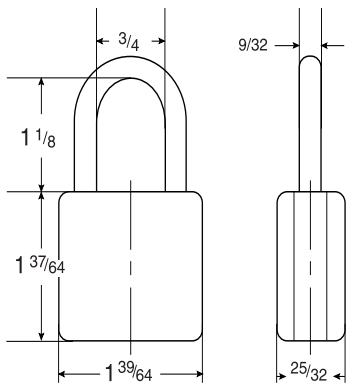
## 40MM PADLOCKS / 50MM PADLOCKS



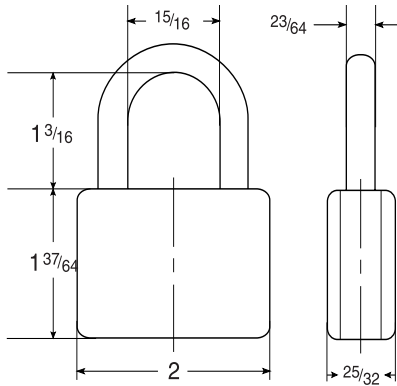
NO. RC-4841

NO. RC-4842

### 40mm Padlock



### 50mm Padlock



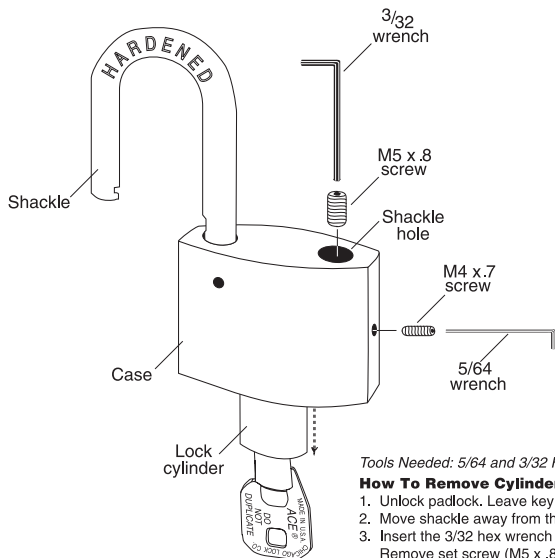
Dimensions shown are without vinyl covers

### New RC Series! Our Finest Security Padlock.

- Two sizes available: 40mm and 50mm.
- Removable core and shackle.
- Extruded brass body.
- Hardened steel shackles to resist cutting and sawing.
- ACE II® patented assembly process locking mechanism.
- 7 pin tubular lock with 2 keys.
- Self locking
- Additional shackle sizes and scratch resistant vinyl cover available.
- Frequent lubrication is recommended.

Lock #	Ref.#	Key #	Std. Pkg.
RC-4841	99291	KD	5
	99292	KA-PL505	
	99293	KA-7302	
	99294	KA-6225	
RC-4842	99301	KD	5
	99302	KA-PL505	
	99303	KA-7302	
	99304	KA-6225	

### How to remove/reinstall cylinder and shackle.



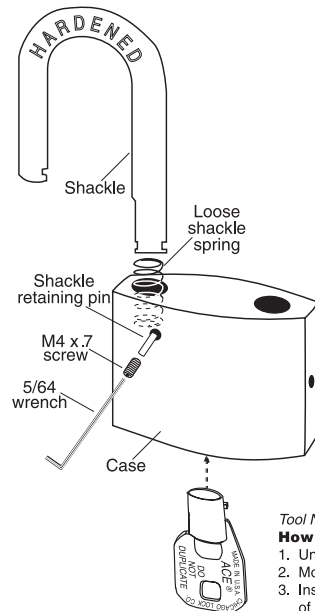
Tools Needed: 5/64 and 3/32 Hex Wrenches.

#### How To Remove Cylinder

1. Unlock padlock. Leave key in open position.
2. Move shackle away from the case.
3. Insert the 3/32 hex wrench into the shackle hole. Remove set screw (M5 x .8).
4. Insert the 5/64 hex wrench into the hole on the side of the case. Remove cylinder retaining screw (M4 x .7).
5. Hold key and gently pull cylinder out of case. (Save the loose stop washer for reassembly).

#### How To Reinstall Cylinder

1. Attach stop washer to the end of the lock cylinder.
2. Slide cylinder all the way down into padlock case.
3. Insert cylinder retaining screw (M4 x .7) into side of case. Tighten firmly with 5/64 hex wrench.
4. Insert set screw (M5 x .8) into shackle hole. Tighten firmly with 3/32 hex wrench.



**STOCK  
LOCKS**

Tool Needed: 5/64 Hex Wrench.

#### How To Remove Shackle

1. Unlock padlock and remove key.
2. Move shackle away from the case.
3. Insert the 5/64 hex wrench into the hole in the front of the case. Remove set screw (M4 x .7) and the shackle retaining pin.
4. Remove the shackle from the padlock. (Save the loose shackle spring for reassembly).

#### How To Reinstall Shackle

1. Be sure that shackle spring is in the shackle hole.
2. Insert new shackle and lock the padlock.
3. Insert retaining pin and set screw (M4 x .7) into the hole on front of the case. Tighten firmly with 5/64 hex wrench.

All part numbers shown in red are available through the STOCK LOCKS program.

# SCREW TYPE / BOLT TYPE LOCKS



## ACE II® SEVEN PIN TUMBLER SCREW TYPE

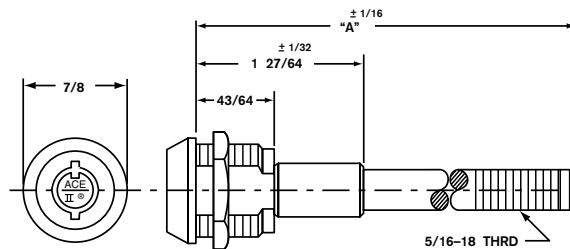


NO. CSA4107

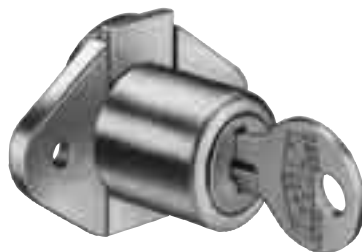
- Patented Ace II® lock assembly in 3/4" diameter.
- Barrel with two flats — 5/8" across.
- 360° key rotation with keypull every 180° (12 and 6 O'Clock).
- Two keys furnished per lock.
- Includes body nut.
- Additional stud lengths available to special order. Minimum order and extended lead time may apply.

Lock No.	"A" Dim.	KD	KA #7341
CSA4107	7 1/32"	99461	99462

(Standard Package of 10)

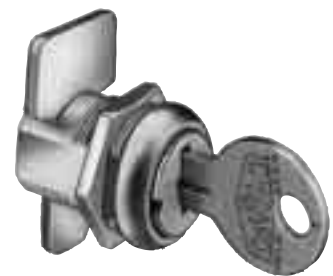


## BOLT TYPE



NO. C1968

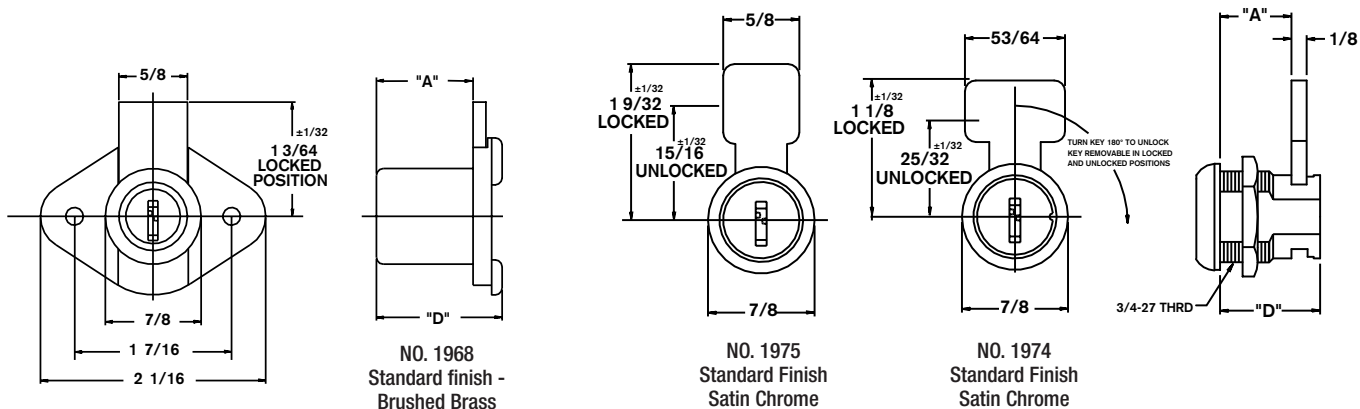
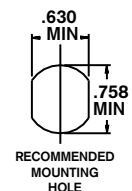
- Five disc tumbler.
- Removable plug feature.
- Steel locking bolt.
- Two keys furnished per lock.



NO. C1974

(Standard Package of 25)

Lock No.	"A" Dim.	"D" Dim.	Key Numbers Available/Reference Numbers			
C1968	57/64"	1 5/32"	1276	KD	1289	1454
	22.6mm	29.6mm	99120	99121	99122	99123
C1974	19/32"	27/32"	1276	KD	1289	1454
	15.1mm	21.4mm	99130	99131	99132	99133
C1975	21/32"	57/64"	1276	KD	1289	1454
	16.7mm	22.6mm	99140	99141	99142	99143

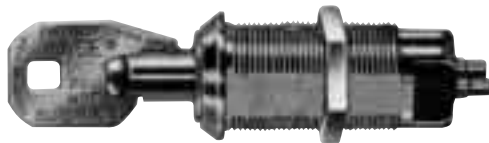


All part numbers shown in red are available through the STOCK LOCKS program.

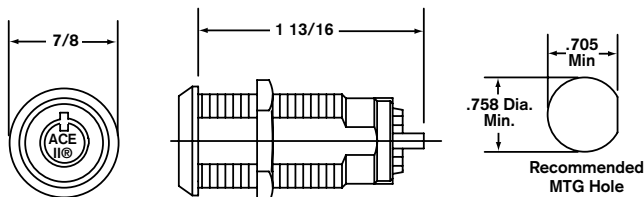
# SWITCH LOCKS



## SINGLE POLE, SINGLE THROW



NO. C4073 SERIES



(Standard Package of 10)

### Patented Ace II® Lock Assembly.

- Maintaining contact switch operated by manually rotating inserted key 90° clockwise from open to closed position.
- Momentary contact switch locks feature spring return from closed to open position after 90° clockwise key rotation to closed position.
- Contact configuration: SPST
- 7 amps (resistive) @ 125 Volts A.C.  
7 amps @ 28 Volts D.C.
- Electrical Life: 6,000 cycles @ Max. Load.
- Contact Resistance: 50 milli ohms initial maximum.
- Standard finish — Bright Chrome.
- Two keys are furnished per lock.
- Master - Keying not available.

C4073-1DC, C4073-70DC  
Available KD, KA to PL927.

C4073-2DC  
Available KD, KA to PL910.

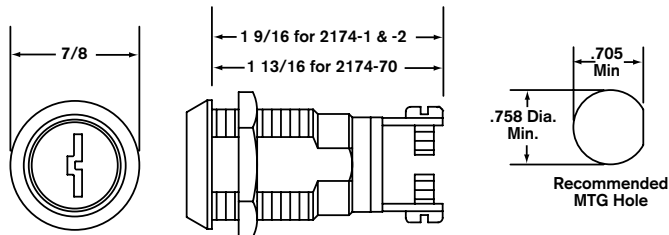
Lock No.	Keypull	Contact	KD	See Below	KA #PL925	KA #PL926	KA #PL927	KA #PL454	KA PL #435
C4073-1DC	OFF Only	Maintaining	99501	KA #PL573 99502	99503	99504	99505	99506	99507
C4073-2DC	OFF & ON	Maintaining	99231	KA #PL910 99232	99233	99514	99515	99239	99516
C4073-70DC	OFF Only	Momentary	99521	KA #PL928 99522	99523	99524	99525	99526	99527

Warning: Improper connection to circuitry may result in shock. Since CompX Chicago does not control the use of its products, external wiring, switch lock selection, and/or use is not the responsibility of CompX Security Products.

## SINGLE POLE, SINGLE THROW



NO. C2174 SERIES



(Standard Package of 10)

### Double Bitted Assembly With Eleven Criss-Cross Blade Tumblers.

- Lock operation same as 4073 Series.
- Contact configuration: SPST
- 7 amps (resistive) @ 125 Volts A.C.  
7 amps @ 28 Volts D.C.
- Electrical Life: 6,000 cycles @ Max. Load.
- Contact Resistance: 50 milli ohms initial maximum.
- Standard Finish — Bright Chrome.
- Two keys furnished per lock.
- Master - Keying not available.

C2174-1DC  
Available KD, KA to 2001, 2007.

C2174-2DC  
Available KD, KA to 2001, 2007, 2387.

C2174-70DC  
Available KD, KA to 2001, 2007, 2126.

Lock No.	Keypull	Contact	KD	KA #2001	KA #2007	KA #2126	KA #2387	KA #2507	KA #2553
C2174-1DC	OFF Only	Maintaining	99151	99152	99153	99150	99154	99155	99156
C2174-2DC	OFF & ON	Maintaining	99161	99162	99163	99160	99164	99165	99166
C2174-70DC	OFF Only	Momentary	99181	99182	99183	99184	99185	99180	99186

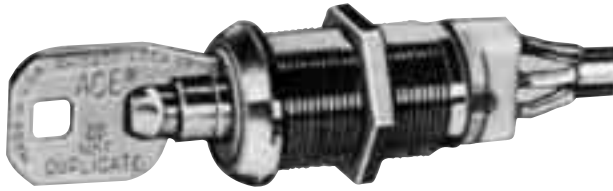
Warning: Improper connection to circuitry may result in shock. Since CompX Chicago does not control the use of its products, external wiring, switch lock selection, and/or use is not the responsibility of CompX Security Products.

All part numbers shown in red are available through the STOCK LOCKS program.

# SWITCH LOCKS

## SINGLE POLE, DOUBLE THROW

**STOCK  
LOCKS**



NO. C4235 SERIES



NO. C3535 SERIES

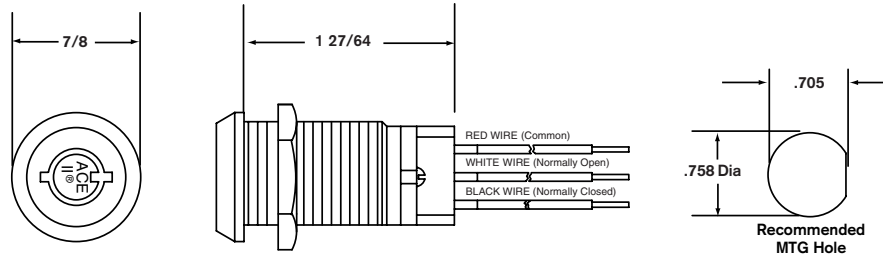
**4235 Series:**  
**Patented Ace II® Lock Assembly.**

**3535 Series:**  
**Double Bitted Assembly With Eleven Criss-Cross Blade Tumblers.**

These features apply to both switch locks:

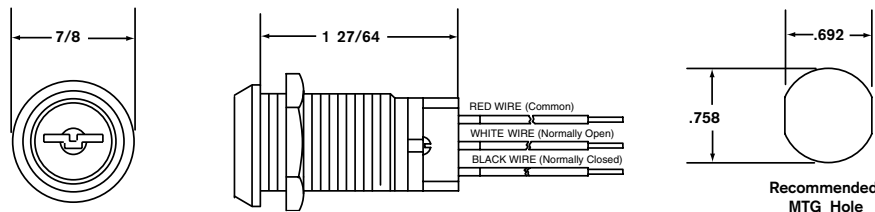
- 7 amps resistive/4 amps inductive @ 115 VAC or 28 VDC.
- Reliable snap action switch provides many thousands of electrical contacts without failure.
- Terminals designed to accept "AMP" .058 pin receptacles.
- Standard finish — Bright Chrome.
- Furnished with 10 inch, 20 gage stranded wire.
- Two keys furnished per lock.
- Master - Keying not available.
- Maintaining only.
- **Switches are U.L. & CSA listed.**

Contact factory for additional specifications.



**Ace II® Switch Locks — SPDT** (Standard Package of 10)

Lock No.	Keypull	Rotation	KD	KA #CLC705	K #CLC706
<b>C4235-DC</b>	2 positions	180° CW	99481	99482	NA
4235BDC	1 position	165° CW	99491	NA	99492



**Double Bitted Switch Locks — SPDT** (Standard Package of 10)

Lock No.	Keypull	Rotation	KD	KA #2382	KA #2387
3535DDC	2 positions	180° CW	99411	NA	99412
<b>C3535-BDC</b>	1 position	165° CW	99421	99422	NA

Warning: Improper connection to circuitry may result in shock. Since CompX Chicago does not control the use of its products, external wiring, switch lock selection, and/or use is not the responsibility of CompX Security Products.

All part numbers shown in red are available through the STOCK LOCKS program.

# KEY HOLDER / SPECIAL PURPOSE LOCKS

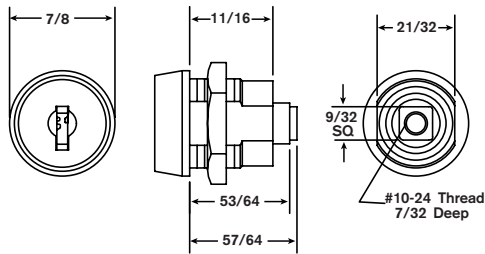


## DRAWER & DOOR

- Six disc tumbler plug in 3/4" diameter.
- Die cast barrel with two flats — 21/32" across.
- Key and cam rotation 90° from locked (12 O'Clock) to unlocked (3 O'Clock) position with keypull in both positions.
- This lock designed to be used with customer's latching mechanism.
- Standard finish — Satin Nickel.
- Two keys furnished per lock.



NO. C17256TNH



Lock No.	KD	KA #1101X
<b>C17256TNH</b>	99061	99062

(Standard Package of 25)

## FILING CABINET

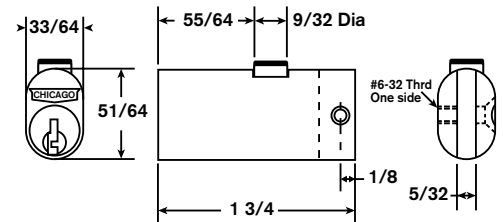
NO. CEXP-19DC



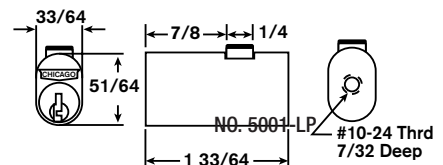
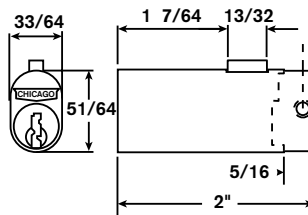
NO. C5001LP

NO. 5002-LP

- Four pin tumbler plug.
- Die cast barrel with die cast bolt.
- No. 5002LP has rectangular bolt.
- Other models have round bolt.
- Standard finish — Satin Chrome.
- Two keys furnished per lock.



NO. EXP-19DC



(Standard Package of 10)

Lock No.	"A" Dim.	"Bolt" Dim.	"D" Dim.	"O.A." Dim.	"W" Dim.	KD	KA #1X20	KA #3X5	KA #2X01	KA #2X02	KA #5X75
<b>C5001LP</b>	55/64"	9/32" dia.	5/16"	1 3/4"	5/32"	99311	99312	99313	99314	99315	NA
<b>C5002LP*</b>	17/64"	27/64" x 9/64"	5/16"	2"	5/32"	99331	99332	99333	99334	99335	NA
<b>CEXP-19DC</b>	7/8"	1/4" dia.	NA	1 33/64"	NA	99531	NA	NA	NA	NA	99532

C5001LP and C5002LP Available KD, KA to 1X03, 1X04, 1X20, 3X5, 2X01, 2X02. CEXP-19DC, Available KD and KA only to 5X75.

\*To order replacement locks for Steelcase equipment, specify 5002LP, KA# CL-S100. Item #99620.

Steelcase is a registered trademark of Steelcase, Inc., Grand Rapids, Michigan.

All part numbers shown in red are available through the STOCK LOCKS program.



NOTES:

# ACE KEY COVERS / WEATHER COVERS








## ACE® KEY COVERS



**Available in a large range of colors, these user friendly Ace II® Key Handle Covers from CompX Chicago make key management easy.**

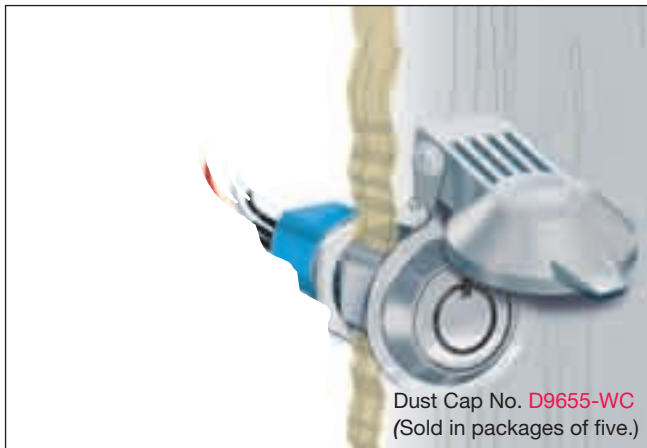
These Key Handle Covers are made of a durable, strong plastic that press-fit any ACE II® key. We like to say they're "user friendly" because the larger size allows for better grip and overall control of the key.

Product No. Specified By Color (Sold in packages of five.)

 Light Blue D9645	 Yellow D9646	 Orange D9647
 Green D9648	 White D9649	 Blue D9650
 Purple D9651	 Tan D9652	 Rust D9653
 Brown D9654		

**STOCK  
LOCKS**

## WEATHER COVERS



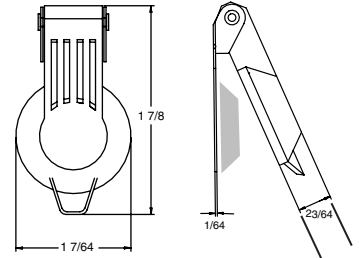
Dust Cap No. D9655-WC  
(Sold in packages of five.)

**Protect Switch Locks and Cam Locks from the elements with this economical, easy to install weather cover.**

Quality construction includes:

- Chrome plated zinc die cast cover.
- Stainless Steel mounting ring.
- Permanently installed rubber seal.
- Positive spring closure to insure seal integrity.

Competitively priced, and in stock for immediate shipment.



## sample boards

### ACE II TUBULAR LOCKS



#### V69B-19 BOARD

V69B-19 Board displays Ace tubular cam locks, C4153 - C4198, C4235-DC switch lock, C4073 series switch locks, C5170 showcase lock, C4260-19 cylinder lock, C425519RL T-handle Cylinder, CSA4107 screw type lock.

### FILE LOCKS, SINGLE AND DOUBLE BITTED LOCKS



#### V69B-20 BOARD

V69B-20 Board displays C5001LP, C5002LP & CEXP-19DC file cabinet locks, C1974 & C1975 bolt locks, C17256TNH six tumbler drawer lock, C3786 single bitted cam lock, C1770 single bitted sliding door lock, C1802 & C3186 double bitted cam locks, C2174 series & C3535BDC switch locks, C1968 drawer lock.



**MAIN OFFICE - FACTORY**

PO Box 200  
Mauldin, SC 29662  
PH: 864-297-6655 FAX: 864-297-9987  
compX.com

**WESTERN DISTRIBUTION CENTER**

9370 Buffalo Avenue, Unit 104  
Rancho Cucamonga, CA 91730  
PH: 909-476-7933 FAX: 909-476-8553



Reorder #: F2644-002  
December 2008  
Printed in U.S.A.

COMPX NATIONAL  
REGISTERED TO ISO 9001  
CERTIFICATE NO. A 2695